

VILLAGES on Mount Hope Bay

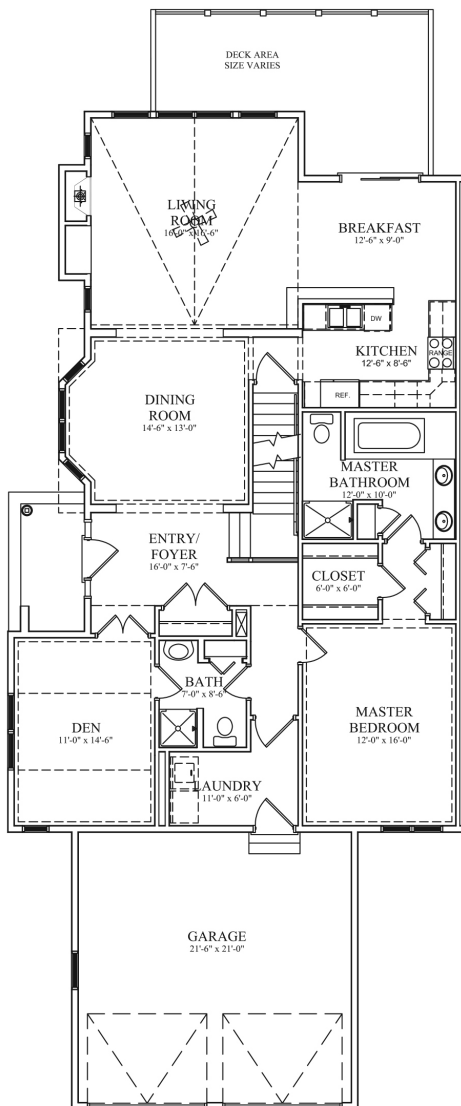
RESIDENCES: LUXURIOUS TOWNHOMES AND MIDRISE CONDOMINIUMS IN RI

37 Watermark Drive End Unit - Sakonnet Style Townhome

Offered at \$780,000

2,346 Finished Square Ft., plus 1,400 Square Ft. in lower level walkout (finished)

FIRST FLOOR



VILLAGES on Mount Hope Bay

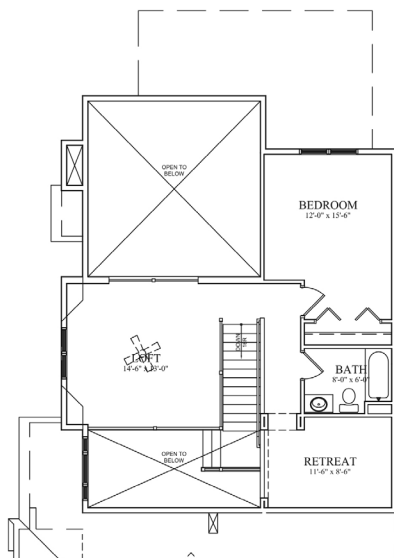
RESIDENCES: LUXURIOUS TOWNHOMES AND MIDRISE CONDOMINIUMS IN RI

37 Watermark Drive End Unit - Sakonnet Style Townhome

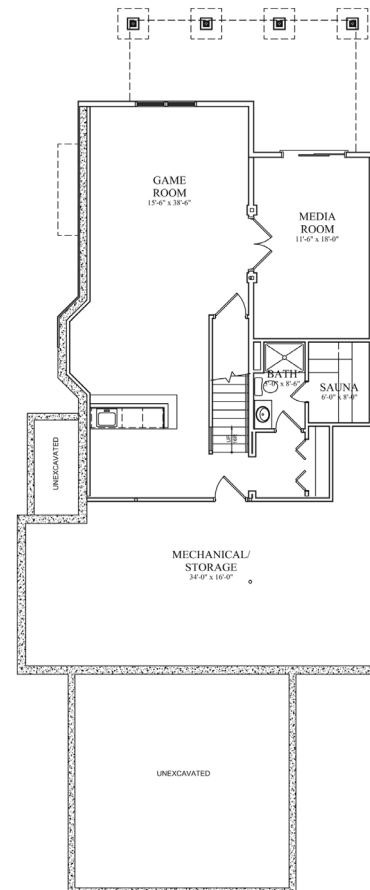
Offered at \$780,000

2,346 Finished Square Ft., plus 1,400 Square Ft. in lower level walkout (finished)

SECOND FLOOR



LOWER LEVEL



- 3 beds, 3.5 baths
- Hardwood floors
- Upgraded cherry cabinets
- Granite counters, stainless steel appliances
- 1st and 2nd floor master suites
- Full finished walkout lower level with bedroom, family room, and full bath
- Gas fireplace
- 2 Car attached garage

Price: \$780,000
Taxes: \$11,742/year
Condo Fee: \$699/month

- Gas Heat, Gas Cooking
- Central Air
- Public Water & Sewer